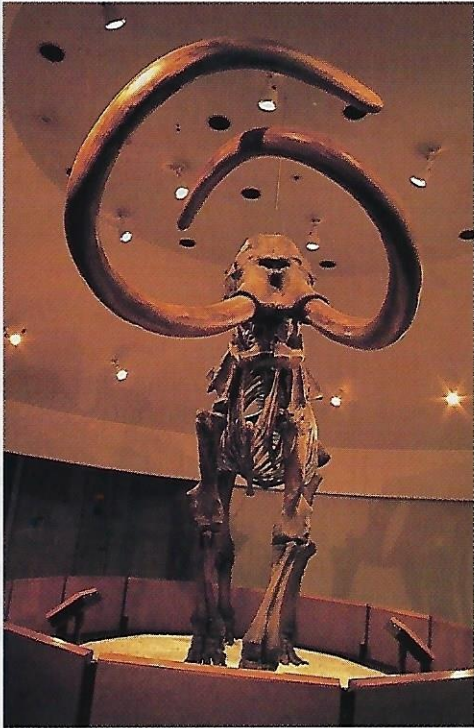


TOMB of TAR

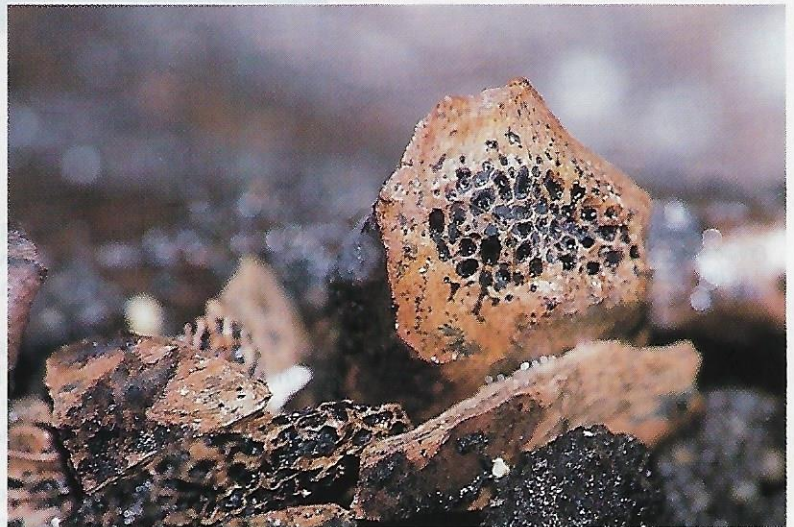
Excavating fossils from the La Brea Tar Pits

BY SHARON ELAINE THOMPSON

Photographs by Noella Ballenger and Jai'ien Tulley unless otherwise noted.



At the George C. Page Museum, the artificial tusks of an Imperial Mammoth cross gracefully 13 feet above the heads of visitors. Although the massive bones are preserved, the dentine in mammoth tusks deteriorates in the asphalt; only fragments are found.



Oil from the asphalt has penetrated this broken saber-tooth cat rib to the marrow. Rancho La Brea specimens are so well preserved, scientists have even found traces of the amino acids and DNA of some of the extinct animals.

Summer, to most southern California residents, means long days spent at — or dreaming of being at — the beach. But to a small group of dedicated people, summer officially begins when the asphalt starts to melt. In tar-splattered T-shirts and jeans, they happily climb down into a black pit and inhale the rising fumes. Pit 91 at the Rancho La Brea “Tar Pits” is open for business.

The asphalt deposits of Rancho La Brea (Spanish for “tar ranch”) are famous as the world’s richest source of Pleistocene fossils. And of the more than 100 excavation sites sunk into the asphalt there, Pit 91 is one of the oldest and richest.

Asphalt seeps are found throughout the world around oil fields.

Earth movement (such as California’s frequent earthquakes) create cracks that allow crude oil and bitumen (asphalt) to escape to the surface. The volatile ingredients quickly evaporate, leaving behind the thick, sticky sediment.

At the end of the Ice Age, about 11,000 years ago, when mammoths and saber-tooth cats roamed what is now the Los Angeles basin, the La Brea seeps were effective black death traps. The climate was cooler and rainier then, and streams were numerous. The asphalt oozed up from the ground, settling in the streambeds and other shallow depressions. But water, leaves, and dirt often concealed the tar. When unwary animals waded in for a drink or

stopped to feed, their feet became mired in the sticky pools, and they were trapped. As they struggled and screamed in terror they inevitably attracted predators, ever ready for an easy meal.

But more often than not the hungry carnivores became trapped too, as they devoured their prey. Their angry snarls alerted still more predators.

Even the meat-eating birds could not escape entrapment. As they swooped to their meal, their wing feathers often dipped in the tar, making them unable to fly. They in turn became part of the feast.

As the bones became saturated with oil, they sank in the shallow pools. Leaves and sediments settled

PALEONTOLOGY



© 1988 Mark Hallett

A saber-toothed cat claims as its next meal a western horse that has been caught by the tar... but the cat may fall prey to the tar next in this painting from the Natural History Museum's traveling exhibit.

over the surface and asphalt continued to seep up from the ground. Gradually, the bones were buried. This cycle of entrapment, disintegration, and burial in fact goes back almost 40,000 years.

Urban Excavation

Most of the tar pits were completely excavated between 1913 and 1915. Pit 91 was taken down about 10 feet. When the work was stopped, it was left open as an exhibit. But it gradually filled with asphalt and debris. In 1969, however, the pit was reopened, the excess asphalt removed, and work started again. Today it is the only excavation of its kind taking place in the heart of a major city.

Every summer, the volunteers and the staff of the Natural History Museum of Los Angeles County and its satellite facility, the George C. Page

Museum of La Brea Discoveries, work removing the asphalt and the valuable prehistoric record it contains. In the past 20 years they have excavated 13 feet of asphalt. George Jefferson, Assistant Curator and head of the Natural History Museum's Rancho La Brea section, estimates they have at least five to seven feet more to go.

The excavation is worked only two months each summer, explains Jefferson. At that time the asphalt is warm and easier to work. Besides, if the dig were worked year round, the sheer volume of the fossils removed would overwhelm the storage facilities. The Page Museum, which is adjacent to the asphalt deposits, houses approximately 4 million individual fossil specimens, estimates Christopher Shaw, the museum's Collections Manager.

Tar pit paleontology is not glam-

orous. Pit 91 is about 25 feet square, its walls supported by steel beams and lined with black, tar-stained boards. The floor of the pit is continually covered with a thin layer of asphalt that seeps up along the pilings that support the walls. Volunteers remove approximately 80 gallons a week in a procedure they call, unromantically but descriptively, "glopping." They use trowels to scrape the asphalt from the floor of the dig, "glop" it into buckets and haul it up the ladder to the surface. They dump the excess into another nearby asphalt deposit, "where it's probably recycled right back into the pit," remarks Eric Scott, Chief Excavator for Pit 91.

The only spots of color in the pit are the orange hard hats worn by staff and volunteers and the bright yellow nylon cord strung across the bottom of the pit. The cord, just

inches from the floor, divides the pit into three foot by three foot squares. Each square is excavated six inches at a time. Workers finish each level before going on to the next.

Before a fossil is removed from the asphalt, its location is noted by taking accurate measurements from two sides and the top of the square. Put into a computer later, the measurements will show exactly how each bone was oriented in the mass, giving scientists information on how the deposit was formed.

Sometimes, though, the fossils don't cooperate in the excavation process. Jefferson tells about finding the pelvis of a giant ground sloth that went into the floor through several six-inch levels. They removed it to prevent it from weathering, but that left a gaping hole in the floor of the pit. To prevent the asphalt on the sides of the hole from slumping in, which would have thrown off later measurements, the hole was lined with plastic and filled with Styrofoam packing material. It seemed like a good idea, says Jefferson, "but when the rains came, we found it bobbing and floating down there." They re-packed the hole with sandbags.

This summer the crew is excavating the last square on the 13 foot level. Scott and a couple of volunteers kneel and sit on boards laid on the asphalt. They work carefully around each bone with small tools, dental picks, and soft brushes. Lying close to the surface of the square is the skull of a saber-tooth cat that lost the battle for survival.

It may take days or weeks to excavate a six-inch-thick square depending on the amount of material in it. "We don't think in terms of time," says Scott. "We just think about removing each specimen as carefully as possible."

Small Ones Count

In their long history, the tar pits have captured everything from mice to mammoths, from seeds to giant ground sloths. Even one-celled animals have been found in the dense asphalt. But when paleontologists started excavating the fossils in the early 1900s, they were primarily interested in museum quality specimens. They rarely saved specimens



Fragments of the museum's original collection of bones are laboriously put together in the laboratory. In the old collection, scientists have discovered a smaller horse and another saber-tooth cat, both previously unknown west of the Rockies.

from animals smaller than a rabbit. Yet, less than one percent of the specimens found in the deposits belong to large animals, says Chris Shaw, who is also Project Co-ordinator for Pit 91. "For every large bone we find, there are 200 to 500 specimens that belong to small animals and plants." Today all the fossils are retrieved regardless of size. As a result, says Shaw, they have added 200 specimens to the list of animals known to have lived during the Pleistocene.

The spectacular skeletons of mammoths, mastodons, and saber-

tooth cats draw the oohs and aahs of visitors to the George C. Page Museum. But according to Shaw, tiny "microfossils" tell more about environmental conditions on the prehistoric savannah than all the mammoth bones put together. Birds and large mammals had large ranges that might cover a variety of environments and climatic conditions, he explains. But tiny animals such as mice and insects stayed within a few acres. They are much more accurate barometers of the climate in a localized area. Understanding the changes in climate may help scien-

PALEONTOLOGY

tists determine the factors that led to the extinction of much of the Pleistocene fauna.

So scientists handle the large fossils carefully, but they don't neglect the asphalt itself. They collect the excess material from each square, pack it in black cans and stack them near the edge of the pit.

Each pit has its own "personality," says Shaw. This is due primarily to the age of the pit, which can range from a mere few thousand years old to Pit 91's venerable 38,000 years. But in some cases the character of the pit is due to the different formation of the deposit. For example, Pit 9 contained almost 90 percent of all the mammoth and mastodon bones found at Rancho La Brea. Shaw believes that the original pool must have been larger and deeper, and more attractive to the ancient elephants. "Elephants love to wallow," he points out.

The most recent deposit to be uncovered formed very differently from the others at Rancho La Brea. It was flat, not conical, and only 1½-2 feet thick. Shelley Cox, Laboratory Supervisor, says it appears the asphalt flowed down into a depression to fill a pool. It was probably not the site of an upwelling of asphalt.

The deposit was found when ground was broken for the Page Museum in 1977. Construction crews were standing by; there was no time to do a slow, methodical excavation. But because of the formation, scientists were able to remove 20 large blocks, wrap them in newspapers

and pack them in plaster-saturated burlap. One by one they are being "excavated" in the Page Museum laboratory.

One of the plaster-encased blocks, roughly four by three by two feet, sits in the middle of the lab now. The top has been sliced off. Poking through the surface are the broken ribs of a saber-tooth cat and the claw and partial skeleton of an eagle. The block's other secrets remain hidden in the asphalt. "It's a real treasure

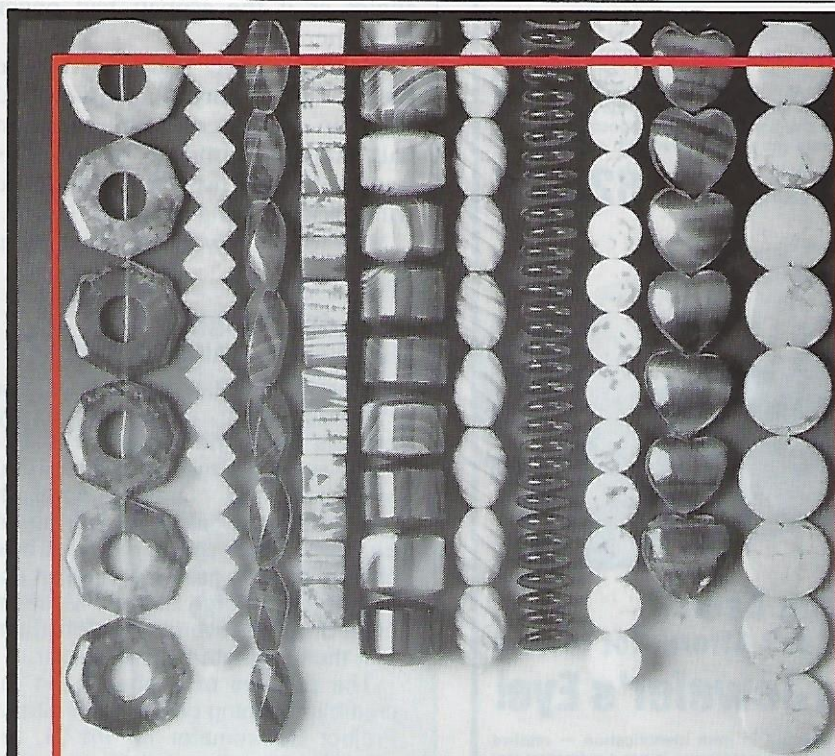
chest," says Cox.

Out in Pit 91, excavators take measurements manually with a ruler. But the procedure in the lab more closely resembles a hospital monitoring system. A metal framework is attached to the ceiling above the block of asphalt. At each corner is a microphone. Sitting close by is a computer.

Using a sonic probe Cox touches the fossil she wants to mark. The probe emits a sound that is picked



Using small dental tools, volunteers work slowly and carefully to remove the specimens from the asphalt in Pit 91. It may take weeks to excavate the material from one 3' x 3' x 6" square of asphalt.



The Only Bead Source You Need.

Sometime soon you may need a strong reliable source for genuine stone beads.

— Call Fine Gems. — We are a major importer of stone beads in all sizes and shapes.

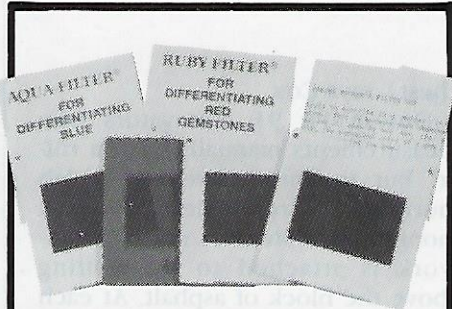
Our desire for long lasting relationships with our customers is reflected in our reliable service, large selection, and fair prices.

FINE GEMS

Fine Gems Enterprises Co., Ltd.

15 West 28th Street 8th Floor, New York, N.Y. 10001
800-237-2072 212-889-3838 Fax: 212-532-6962

Volume Orders Encouraged



Bead Buyer's and Parcel Picker's Gem Filter Set

Designed to be used as a quick and easy way to identify the type of material found in a string of beads, a bulk parcel of beads or stones as well as individual stones. Complete set comes with four color filters: the Aqua-Filter, the Ruby-Filter and two others specifically chosen to provide observations in selected regions of the color spectrum. Easy to follow directions and included with each set.

No. 50-992
Ship. wt. 3 oz.

\$20.00



Buying Gems? You Can't Afford Not to Own The Jeweler's Eye!

A new concept in gem identification — relative reflectivity. This instrument is not a refractometer but rather a reflectometer which utilizes the principle that all faceted gems reflect energy to differing degrees. If you are involved in buying faceted stones of any kind, you need the Jeweler's Eye. It is able to identify stones in the mounting. Instant readings. Completely portable. One year warranty.

No. 51-006
Ship. wt. 1 lb.

\$195.00

All prices subject to change without notice.
All prices F.O.B. Santa Monica, CA.
Include sufficient shipping (\$5.00 min.).

Bourget Bros.
LAPIDARY AND JEWELER'S SUPPLIES
1636-B 11th St., Santa Monica, CA 90404
(213) 450-6556 FAX: (213) 450-2201

Write for FREE Catalogs!

Name _____
Address _____
City _____
State _____ Zip _____

PALEONTOLOGY

up by the microphones. The computer analyzes the distance the sound travels to each of the four mikes and plots the exact position of the bone in the block.

After all the fossils have been marked and removed, the computer can generate three-dimensional graphics showing the position and relationship of every bone in the asphalt block. In effect, the scientists will be able to pick the block up, turn it, and look at it from different angles as if the asphalt had never been there.

Nicknamed the "fishbowl" by the staff, the laboratory is a glass-walled room in a corner of the museum hall. All day children and adults stand with their noses pressed to the windows watching the work inside.

Most of that work is done by a

spectrum of volunteers from high school juniors to retirees. They patiently clean, sort, label, and piece together the innumerable scraps of caramel-colored bone. Shelley Cox seems to be everywhere, answering questions, giving advice, or teaching new techniques.

In one area, two teenage girls separate specimens from boxes of broken and unidentified bones from the early excavations. The boxes may contain a slip of paper giving the pit number and collection date, but little else is known about them. The volunteers sort them into piles of teeth, pieces of jaw and a large pile Cox refers to as the "I-don't-knows."

With all the new material coming from Pit 91, it hardly seems worth the trouble to clean 80 years of dust

Almost Fossils

BY SHARON ELAINE THOMPSON

Visitors to the Rancho La Brea "Tar Pits" are a bit incredulous when they are told that large and powerful animals such as the American lion, mastodon, and giant ground sloth were snared in only a few inches of asphalt. But their expressions change as they gather around an exhibit in the George C. Page Museum of La Brea Discoveries that lets them test their strength against the tar.

The puddles of asphalt exert incredible stopping power. Chris Shaw, Project Co-ordinator for Pit 91, reports having seen full-grown cattle that have died after being trapped in just over an inch of asphalt. Less than half an inch got me.

Shaw says asphalt occasionally comes up into the landscaped surface of the park surrounding the deposits. While visiting the Pit 91 enclosure, I unwittingly stepped in the insidious, dust-covered beginnings of a new seep.

Seeing my astonishment when I couldn't move, Eric Scott, Chief Excavator, cried, "That's a perfect example of how the animals were caught!" I needed no more convincing.

But at least I had good company. No less a personage than film director David Attenborough has had to be tugged from the tar. Attenborough visited Rancho La Brea during the filming of his new series, *Lost Worlds, Vanished Lives*.

I got off easily, returned home with my shoes and some shreds of pride.

George Jefferson, head of the Natural History Museum's Rancho La Brea section, however, remembers one assistant who walked across Pit 10 with impunity in the winter when the asphalt was hard. The following summer he returned and followed the same path across the compound. He was caught fast in the thick, soft asphalt. "I think his shoes are still in there," says Jefferson.

Although the tar snares the casual visitor, the people who work on the excavation daily have the greatest risk of getting stuck. Chris Shaw says he has had boots and gloves stuck as he's worked. Unlike the animals that were trapped centuries ago, humans usually have someone to pull them out.

Eric Scott needed that help when he was once mired briefly. He had tried to remove a sign tossed into one pit by vandals. Before he knew it, the tar had oozed up past his ankles. He had to send a volunteer for help. While he was waiting he heard a man outside telling his son that the man in the tar was sinking just like a mammoth.

When help finally came, it took two people to pull Scott out. "I almost lost my boots," he says. "Shelley [Shelley Cox, Laboratory Supervisor] was standing there yelling, 'Eric, forget the damn boots!' But they're good boots."

Perhaps that is how a defiant saber-tooth cat felt, his paws sticking in the asphalt yet unwilling to give up his meal.

KENT

South American Diamond Mines

Cut Diamonds Available In All Sizes,
Shapes and Qualities From A Direct Source

GEM ROUGH

EXCEPTIONAL Rough DIRECT From Our
Largest Over-Seas Buying Trip!

FACET ROUGH:	Price
TSAVORITE (African)—A rare gem all cutters desire. A bright green to emerald green color. Sizes from 2 to 3 cts. and 3 to 5 cts.	2-3 cts. \$20.00-65.00/ct. 3-5 cts. \$40.00-125.00/ct.
RASPBERRY RHODOLITE (Tanzania)—Beautiful pink to Raspberry gems. All pieces are clean and well shaped. Sizes: 5-10 carats; and 10-15 carats. Larger sizes available.	\$3.50/ct. \$5.50/ct.
AMETHYST (Zambia)—Completely clean pieces of dark purple color with blue and red overtones. Sizes: 5-10 carats; and 10-15 carats.	\$2.00/ct. \$2.75/ct.
CHROME DIOPSIDE (Russia)—A true chrome green color, similar to the finest Emeralds. Flawless. Sizes: 4-7 carats; and 7-10 carats.	\$4.50/ct. \$6.50/ct.
TOURMALINE (Mozambique)—An assortment of brilliant colors (Green, Blue, Pink and Orange). Sizes: 5-50 carats.	\$4.00-20.00/ct.
CITRINE (Brazil)—Clean pieces of the deep golden-orange color. Sizes: 5-30 carats.	\$.30-\$.80/ct.
CHROME TOURMALINE (African)—Emerald green color, will cut clean 1 ct. gems.	\$32.00 ct.
ROYAL SUGILITE (South Africa)—A rich grape colored gem with translucency up to 10 mm in thickness. Sizes: 2-50 grams.	\$5.00-30.00/gr.
BLUE TOPAZ —Flawless medium blue pieces, similar to the finest Aquamarines.	\$1.60/ct.
CABBING ROUGH:	
VISCARRA STONE (Mexico)—A beautiful purple patterned fluorite. Similar in color to the very rare Royal Sugilite. 1-3 lbs. each.	\$25.00/lb.
LAPIS (Afghanistan)—A deep royal electric blue without any calcite. Rarely seen by most cutters. 5-80 grams per piece.	\$4.00-7.00/gr.
MALACHITE (Zaire)—Supreme select material. Magnificent color contrast in swirl, bulls-eye and straight banded patterns. 2-40 lbs. each.	\$16.00/lb.
SUGILITE (South Africa)—An extremely rare gem, with a soft lilac to deep grape purple color. Sizes: 4-500 grams per piece.	\$1.00-5.00/gr.
SODALITE (Brazil)—Cuts cabs of solid deep purple blue without any white veins. Some look like fine lapis. Sizes: 5-3 lbs. per piece.	\$7.00/lb.
TIGEREYE (Africa)—Beautiful golden honey brown. Pieces from 1/2 to 1 1/2 inches in thickness. Sizes: .5-4 lbs. each.	\$5.25/lb.
GREEN AND PURPLE FLUORITE (Mexico)—This is a combination of a dark Amethyst like color and a bright green. Sizes: 5-40 lbs.	\$5.00/lb.

*Many other types of rough available.

Write:

Kent South American Diamond Mines

15920 West 12 Mile Road
Southfield, Michigan 48076

Or Call:

(313) 557-3353

PALEONTOLOGY



Even toddlers can't resist the temptation to test themselves against the tar. This popular exhibit in the George C. Page Museum convinces visitors that the innocent-looking asphalt was deadly.

from these leftovers, but it is. Tucked away unnoticed in the boxes, Cox says they have discovered the remains of a second type of saber-tooth cat called *homotherium* and a smaller kind of horse. Both were previously unknown west of the Rocky Mountains.

Another volunteer, oblivious to the faces at the window, gently turns, twists and tries, with infinite patience, to match broken fragments of bone. Lying next to his elbow is a carefully reconstructed rib, systematically wired together.

Using a magnifier, another volunteer is sorting the microfossils from the asphalt matrix of Pit 91. After the asphalt is dissolved away, it leaves a pile of what looks like coarse sand. Most of it is just that. But the volunteer's skilled hands and eyes effortlessly separate tiny freshwater shells and minuscule bones, fragments of insect carapaces, and plant material from the gravel. "After a while, you know what to look for," says Cox reassuringly.

Preserved, Not Replaced

One of the most striking characteristics of La Brea's fossils is the quality of the preservation of the bones. Unlike many types of fossils, these bones have not been replaced by dissolved minerals. They have been preserved by the saturation of oil. They show all the detail that would be found on them if the animal had died only recently, includ-

ing marks where muscle was attached and blood vessels passed. In broken bones, the spongy marrow is distinctly visible, each cell of tissue filled with oil. "We're *very* spoiled," says Cox.

The asphalt saturates the bones so completely it has even preserved the amino acids and DNA, says Shaw, who would apparently give a lot to see a live saber-tooth cat. "The next thing we're going to do is start cloning them," he says with a wicked glint in his eye.

But La Brea comes with its own brand of problems, too. Most of the animals that died in the tar met violent ends. Their bones were often dragged off and gnawed. Prehistoric winter rains washed the loose bones downstream to other locations.

Even after they were entombed in tar, the bones did not stop moving. The asphalt moves when it gets warm, and energetic bursts of gas and oil coming up from the ground stir it up even more. As a result, the bones of all the animals at La Brea are jumbled together leaving scientists with an incredible jigsaw puzzle.

Most of the complete skeletons on display in the George C. Page Museum, says Cox, can contain bones from almost as many animals as the skeleton has bones. One reconstructed saber-tooth cat's paw displayed in the laboratory window is made up of bones taken from at least six different pits.

But despite the jumble, the patient paleontologists at Rancho La Brea are gaining vivid insights into life on the California plain at the end of the Pleistocene. Some of the mysteries they are unravelling will be discussed in an upcoming issue of *Lapidary Journal*. ♦

Note: The Rancho La Brea "Tar Pits" are adjacent to the George C. Page Museum of La Brea Discoveries at 5801 Wilshire Boulevard in Los Angeles, California. The Pit 91 viewing station is open Wednesday through Sunday, 10 a.m. to 4:30 p.m. from early July through Labor Day. Admission is free.

The Page Museum is open Tuesday through Sunday from 10 a.m. to 5 p.m. Admission is \$3.00 for adults, \$1.50 for students and senior citizens 62 and older, and 75 cents for children 6 to 12. Parking behind the museum is \$5.00 in advance; \$2.00 is refunded with museum validation. For recorded information, call: (213) 936-2230.